



3DM™ Disk Management Software

3DM FEATURES

- Displays drive and RAID array status
- Remote configuration of new arrays
- Hot swap of failed drives
- Array rebuild pacing and scheduling
- HTML-based user interface ensures cross platform consistency
- Email notification of disk array events such as degrade or error conditions
- Installed on all Escalade™ controllers

3DM, 3ware's web browser-based disk management utility, allows local and remote management and monitoring of arrays and their disks. With its simple native GUI and browser-based user interface, 3DM software makes storage manageability easier than ever before. In addition, the software provides immediate email notification of disk array events such as degrade and other error conditions for greater reliability and monitoring of your network.

Web-based for Convenience

At 3DM's core is an embedded web-server using HTTP to serve up the drive and array status, error log, and configuration pages. Due to the software's browser-based user interface, you can manage your storage from wherever you have network access, without installing software on the remote system. And, 3DM's password protection option prevents unauthorized access to your storage ensuring the security of your network.

Errors Generate Immediate Alerts with 3DM

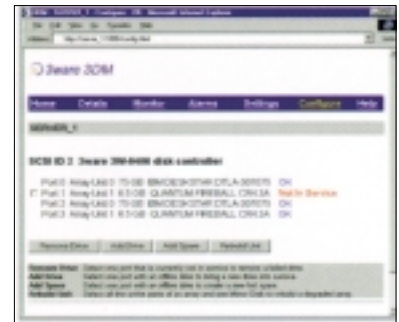
3DM software's error alert feature sends immediate notification of disk array events and other error conditions. The software is easily configured to send notification via email alerts. System status reports are available by email, daily or weekly.

Remote Management for High Availability

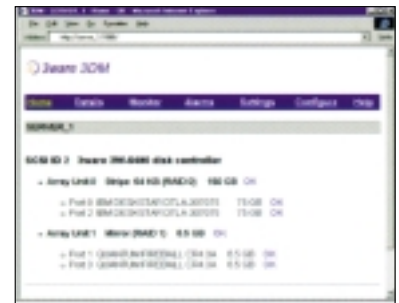
3DM software has hot swap and hot spare features ensuring data availability and greater manageability. While your system is active, failed drives can be hot swapped and arrays can be managed remotely. The array can be rebuilt immediately or scheduled for a time when the system is less busy. The percentage of CPU devoted to the rebuild can be adjusted to minimize the impact to system performance.

Technical Specifications

OS Support: Windows® 2000/NT/98, Linux®, FreeBSD
Web-browser Support: Netscape®, Internet Explorer



Failed drives can be hot swapped and arrays configured while system is active.



Web-based user interface offers remote access and cross platform consistency.